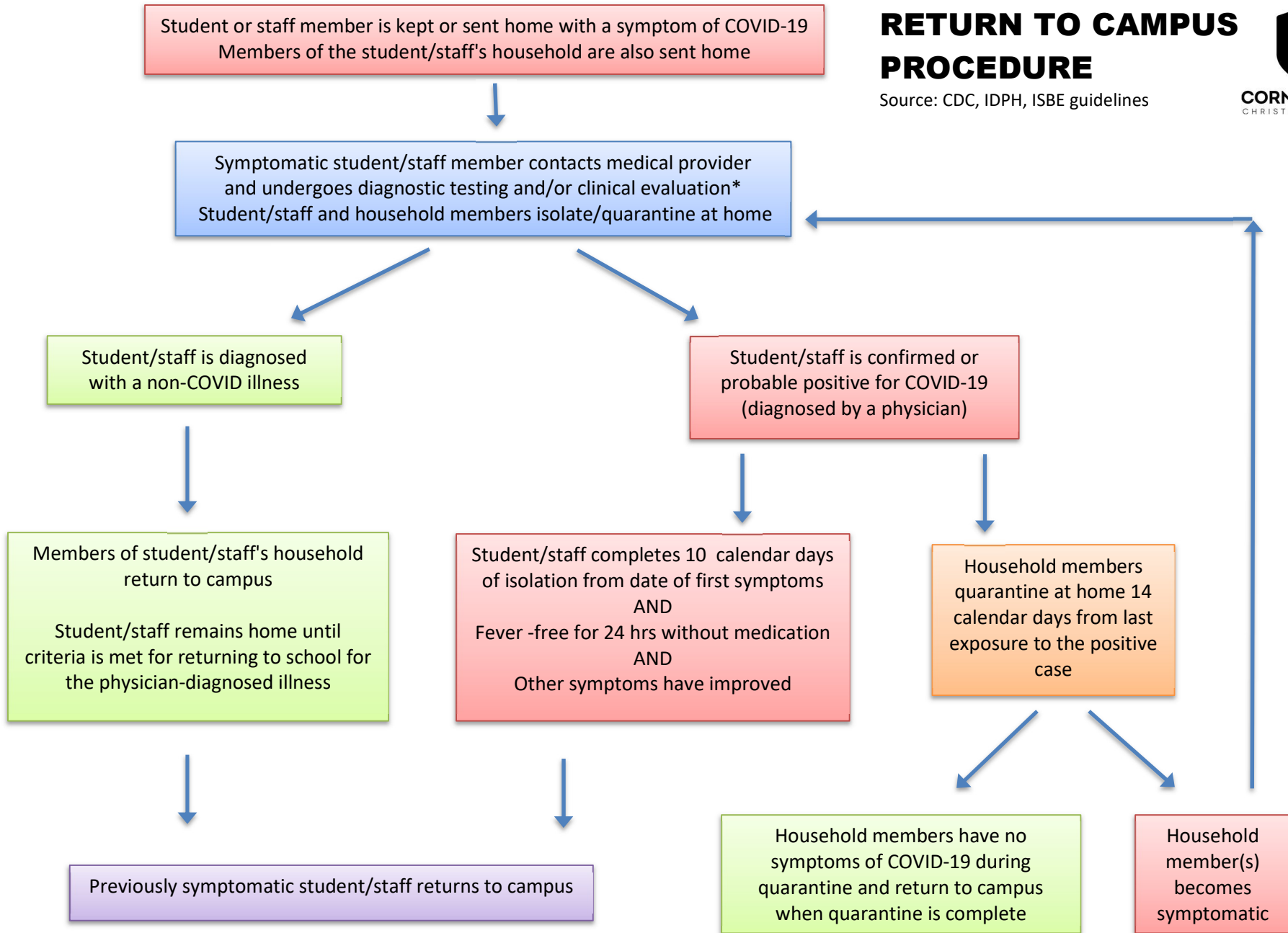


RETURN TO CAMPUS PROCEDURE

Source: CDC, IDPH, ISBE guidelines



*Students/staff members sent home for COVID-19 symptoms who chose to NOT undergo diagnostic testing and/or clinical evaluation must complete 10 calendar days of isolation from date of first symptoms, be fever free for 24 hrs without the use of fever-reducing medication, and experience improvement of symptoms before returning to campus. The student/staff's household members must quarantine 14 days from last exposure to the symptomatic case and remain symptom-free before returning to campus.